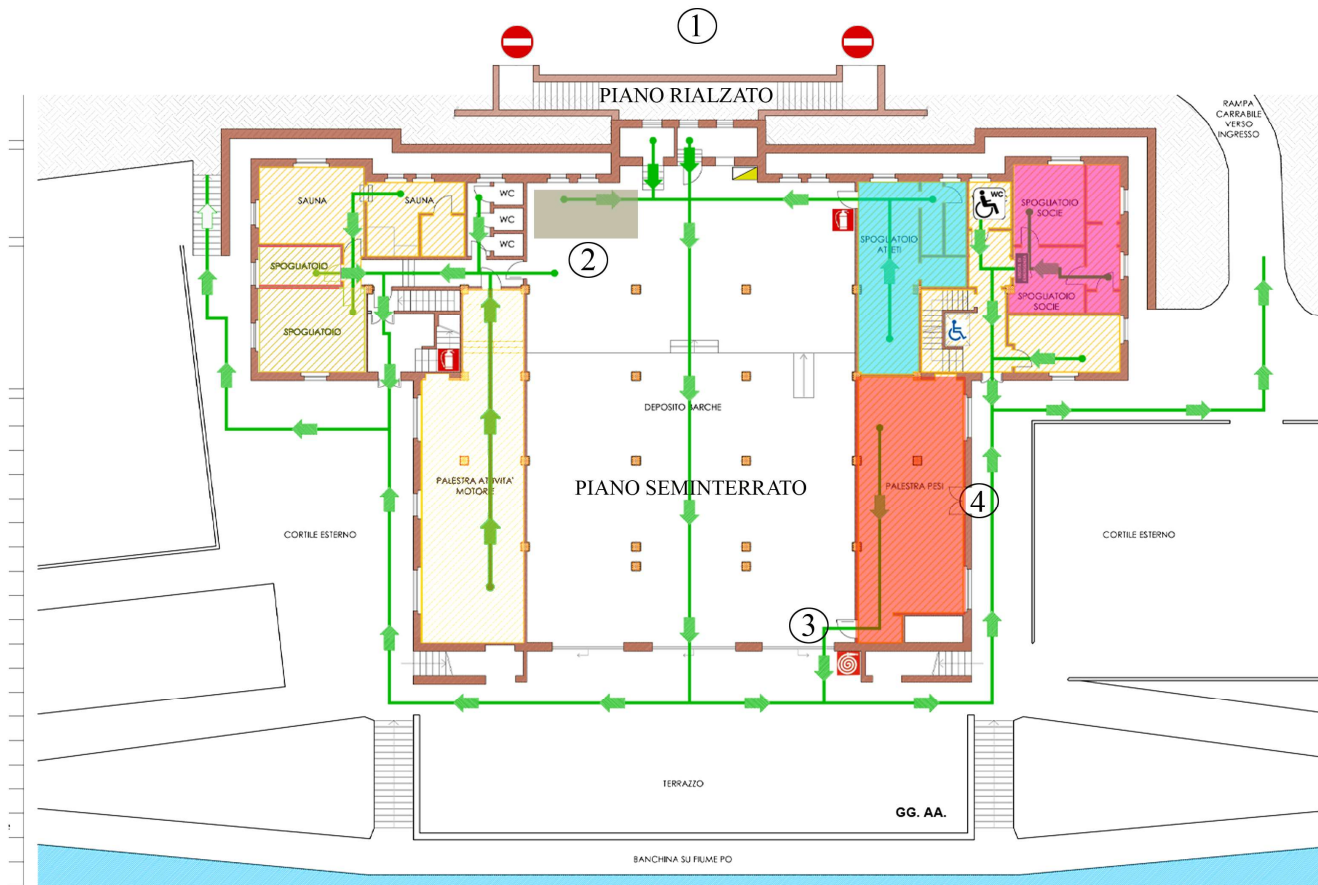


D'INVERNO SUL PO 2026
 4° TROFEO MARTOGLIO
 GARE SPECIAL OLYMPICS INDOOR
 07 FEBBRAIO

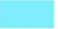




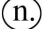




POSTAZIONI:

- 1) Ingresso cancello Esperia / info point
- 2) Zona riscaldamento
- 3) Entrata palestra gara
- 4) Uscita palestra gara

N.B.

Per normative VVFF e linee guida CONI, la capienza massima della palestra gara è di massimo 15 persone.

- | | | |
|--|--|--|
|  Spogliatoi maschili |  Elevatore per disabili |  Percorsi antincendio |
|  Spogliatoi femminili |  Zona riscaldamento |  Postazioni staff |
|  Palestra gara |  WC riservato ai disabili | |

